

A group of Native Americans on horseback, possibly during a hunt or a traditional ceremony, in a field. The image is a faded, sepia-toned photograph that serves as the background for the text.

# **Growth Of Aboriginal Casinos In North America**

## **Future Prospects**

**Durand F. Jacobs, Ph.D., ABPP**

**Clinical Professor of Medicine (Psychiatry)**

**Loma Linda University Medical School**

**California**

# AGENDA

1. Historical Overview
2. The Canadian “New White Buffalo”
3. “Trojan Horse” Concerns:  
Evidence for Gambling-Related Problems
4. Endgame Options:  
Triumph, Tragedy or Trade-off?  
The Hard Questions
5. The Elder’s Answer

# AGENDA

## 1. Historical Overview

- Native American casinos in the U.S. (1988 to present)
- First Nations casinos in Canada (1994 to present).

# AGENDA

2. The Canadian “New White Buffalo”
  - On-reservation casinos

# First Nations On-Reserve Gambling

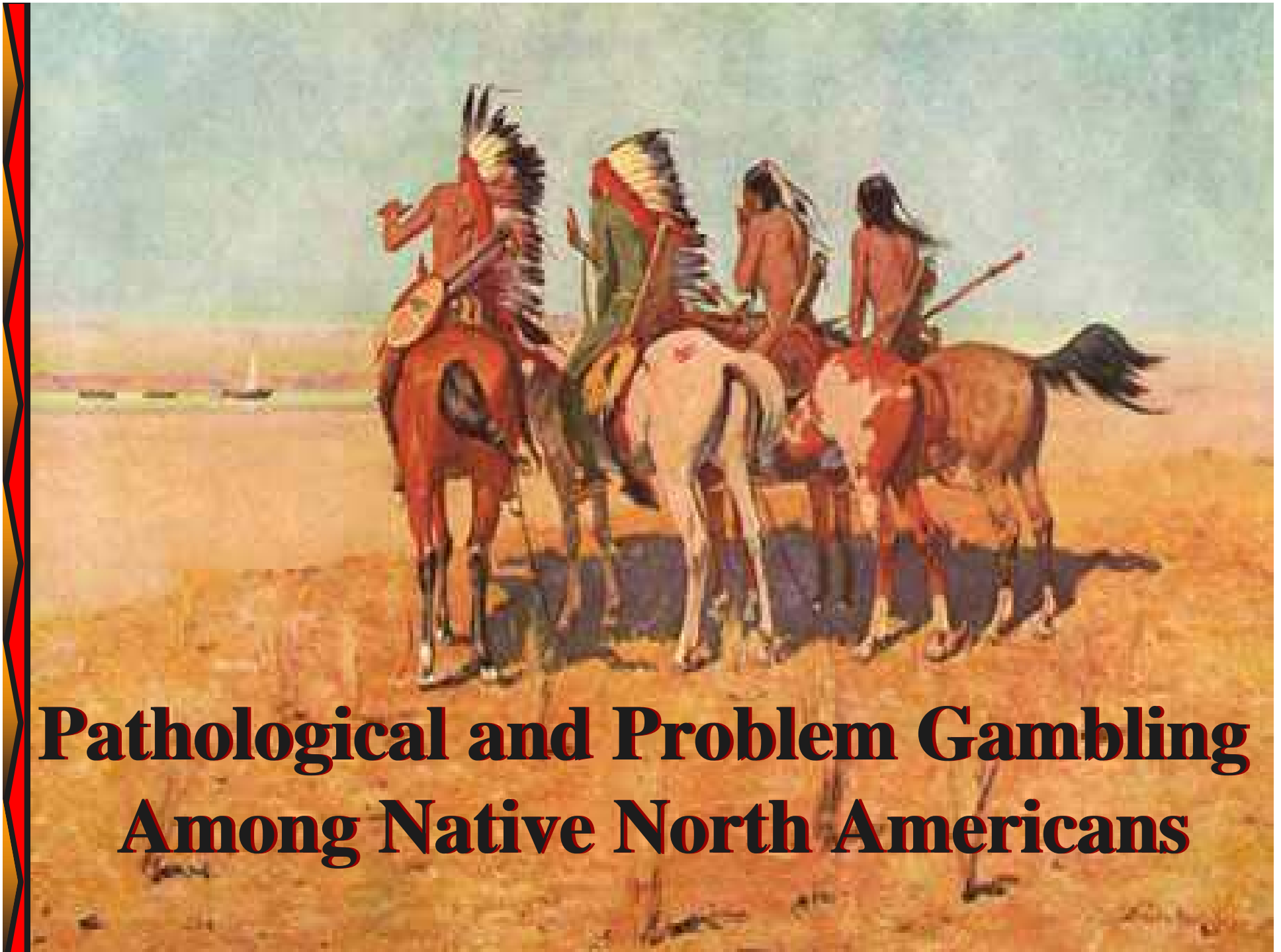
Prov	Provincial Lotteries	FN Charity Gaming	Provincial VLTs	Curr. FN Casino	Future FN Casino
BC	●	●			●
AB	●	●	1		●
SK	●	●	2	●	
MB	●	●	●		●
ON	●	●		●	
QC	●	●	●		
NB	●	●	●		
NS	●	●	●		
PE	●	●			
NF	●	●			

Note: 1. AB First Nations are permitted to operate VLTs, but provincial policy only allows VLTs in liquor licensed establishments. No AB First Nations have licensed facilities. 2. Saskatchewan First Nations are permitted to operate VLTs, but the Federation of Saskatchewan Indian Nations are not pursuing VLS. For more information see Kelley, 2001

# AGENDA

## 3. “Trojan Horse” Concerns: Evidence for Gambling-Related Problems

- Compared to non-aboriginal neighbors
- Among aboriginal substance abusers
- The gender surprise
- Intergenerational effects
- Roots in early childhood trauma(s)



**Pathological and Problem Gambling  
Among Native North Americans**

# Prevalence of Gambling Problems Among Native Americans and Caucasians in Rural Minnesota

## Active Adult Gamblers

	Native Americans (N=221)	Caucasian (N=261)	Tscore
Pathological Gambling	2.8%	1.6%	p>.01
Problem Gambling *	9.1	4.6	p>.01

## Juvenile Gamblers

	(N=161)	(N=115)	
Pathological Gambling	9.6%	5.6	p>.01
Problem Gambling	14.8	10.5	p>.01

\*Using SOGS Criteria; Source: D. Zitzow (1996)

## Problem Gambling Among Male Adults Receiving Treatment For Substance Abuse at Veterans Administration Hospitals In Five States (N=1706)

Hospital Samples	CA (N=108)	OH (N=1352)	SD (N=85)	VA (N=105)	WY (N=56)	Total (N=1706) Median
Mean Age (years)	37.5	40.3	41.8	38.5	42.7	40.3
Pathological Gamblers (SOGS 5+)	23%	13%	13%	23%	20%	20%
Potential Pathological Gamblers (SOGS 3 & 4)	5	6	16	30	7	7%
<b>Total Problem Gamblers (SOGS 3 to 5+)</b>	<b>28%</b>	<b>19%</b>	<b>29%</b>	<b>53%</b>	<b>27%</b>	<b>28%</b>

## Prevalence of Problem Gambling Among Male Adults In Treatment For Substance Abuse at Veterans Administration Hospitals In Five States (N=1706)

<b>STATE</b>	<b>Mean Years</b>	<b>Pathological (Gamblers SOGS 5+)</b>
CA (N=108)	37.5	23%
OH (N=1352)	40.3	13
SD (N=85)	41.8	13
VA (N=105)	38.5	23
WY (N=56)	42.7	20
<b>TOTALS (N=1706)</b>	<b>40.3</b>	<b>Median = 20%</b>

## Prevalence of Problem Gambling Among Male Adults In Treatment For Substance Abuse at Veterans Administration Hospitals In Five States (N=1706)

<b>STATE</b>	<b>Mean Years</b>	<b>Potential Pathological Gamblers (SOGS 3 &amp; 4)</b>
CA (N=108)	37.5	5%
OH (N=1352)	40.3	6
SD (N=85)	41.8	16
VA (N=105)	38.5	30
WY (N=56)	42.7	7
<b>TOTALS (N=1706)</b>	<b>40.3</b>	<b>Median = 7%</b>

## Prevalence of Problem Gambling Among Male Adults In Treatment For Substance Abuse at Veterans Administration Hospitals In Five States (N=1706)

<b>STATE</b>	<b>Mean Years</b>	<b>Total Problem Gamblers (SOGS 3 to 5+)</b>
<b>CA (N=108)</b>	<b>37.5</b>	<b>28</b>
<b>OH (N=1352)</b>	<b>40.3</b>	<b>19</b>
<b>SD (N=85)</b>	<b>41.8</b>	<b>29</b>
<b>VA (N=105)</b>	<b>38.5</b>	<b>53</b>
<b>WY (N=56)</b>	<b>42.7</b>	<b>27</b>
<b>TOTALS (N=1706)</b>	<b>40.3</b>	<b>Median = 28%</b>

# Ethnicity of Male Adults Hospitalized For Substance Abuse Who Also Were Pathological Gamblers (N=247)

<b>Mean Age</b>	<b>40.5 years</b>	<b>Range 37.5 to 42.7 years</b>
<b>SOGS Scores</b>	<b>Median = 9</b>	<b>Range 5-19</b>
<b>Married, living with wife</b>	<b>Mean=31%</b>	<b>Range 4-36%</b>

<b>Ethnicity:* Non-Caucasians among those with SOGS 5+</b>			
<b>Black</b>	<b>79% (VA)</b>	<b>28% (CA)</b>	<b>9% (WY)</b>
<b>Native American</b>	<b>64% (SD)</b>		
<b>Hispanic</b>	<b>12% (CA)</b>		
<b>Asian</b>	<b>0%</b>		

\* Not all five hospitals recorded ethnicity in a consistent manner

# Gambling Problems Among Native Americans In Treatment For Substance Abuse South Dakota (Sioux)

	<b>Native American (N=32)</b>	<b>Caucasian (N=53)</b>
<b>Mean Age</b>	<b>46.5 years</b>	<b>44.9 years</b>
<b>Pathological Gambler (SOGS 5 or more )</b>	<b>22%</b>	<b>7%</b>
<b>Potential Pathological Gambler (SOGS 3 and 4)</b>	<b>19</b>	<b>14</b>
<b>Total Problem Gamblers (SOGS 3-5+)</b>	<b>41%</b>	<b>21%</b>

Source: C. Elia, and D.F. Jacobs (1993) *International Journal of the Addictions*, 28(7), 659-666.

# Prevalence of Gambling Problems: Native Americans In Treatment For Substance Abuse

## GROUP I. IOWA (N=62)

Prevalence Rates*	Males (N=31)	Females (N=31)	Both (N=62)
<b>Pathological Gamblers</b>	<b>35%</b>	<b>45%</b>	<b>40%</b>
<b>Potential Pathological Gamblers</b>	<b>19</b>	<b>23</b>	<b>21</b>
<b>Total Problem Gamblers</b>	<b>54%</b>	<b>68%</b>	<b>61%</b>

\*Based on SOGS Scores: pathological gambler = 5+, potential pathological gambler = 3-4;

Source: Durand F. Jacobs, Ph.D., APBB; Loma Linda University Medical School, California

# Gambling Problems: Native Americans In Treatment For Substance Abuse

## GROUP II. Minn (N=48)

Prevalence Rates*	Males (N=25)	Females (N=23)	Both (N=48)
<b>Pathological Gamblers</b>	16%	22%	19%
<b>Potential Pathological Gamblers</b>	32	22	27
<b>Total Problem Gamblers</b>	48%	44%	46%

\*Based on SOGS Scores: Pathological gambler = 5+; potential pathological gambler = 3-4

Source: Durand F. Jacobs, Ph.D., APBB; Loma Linda University Medical School, California

# Frequency of Gambling and Extent of Gambling Problems Among Native Americans In Treatment For Substance Abuse

**Gambling Once a Week Or More (All Games):**

## Group I. Iowa (N=62)

Extent of Gambling Problem: (Based on SOGS Scores)*	Males (N=31)	Females (N=31)	Both (N=62)
Pathological Gamblers	20	22	42 (68%)
Potential Pathological Gamblers	4	3	7 (11%)

\*Pathological Gambler = 5+; Potential Pathological Gambler = 3-4

# Relationship Between High Frequency of Gambling and Extent of Gambling Problems Among Native Americans In Treatment For Substance Abuse

**Gambling Once a Week Or More (All Games):**

## **Group II. Minn. (N=48)**

<b>Extent of Gambling Problem: (Based on SOGS Scores)*</b>	<b>Males (N=25)</b>	<b>Females (N=23)</b>	<b>Both (N=48)</b>
<b>Pathological Gamblers</b>	<b>4</b>	<b>5</b>	<b>9 (19%)</b>
<b>Potential Pathological Gamblers</b>	<b>8</b>	<b>5</b>	<b>13 (27%)</b>

\*Pathological Gambler =5+; potential pathological gambler = 3-4

# Ethnicity of Male Adults With Gambling Problems In Treatment For Substance Abuse



Prevalence Rates	Caucasians	Native Americans		
	South Dakota (N=53)	South Dakota (N=32)	Minn. (N=48)	Iowa (N=62)
Pathological Gamblers	7%	22%	19%	40%
Potential Pathological Gamblers	14	19	27	21
Total Problem Gamblers	21%	41%	46%	61%



# Gender Differences Among Problem Gamblers In Treatment For Substance Abuse



Pre- valence Rates	Caucasians		Native Americans					
	South Dakota		South Dakota		Minnesota		Iowa	
	Males (N=53)	Females (N=0)	Males (N=32)	Females (N=0)	Males (N=25)	Females (N=23)	Males (N=31)	Females (N=31)
Path- ological Gamblers	7%	/	22%	/	16%	22%	35%	45%
Potential Path- ological Gamblers	14	/	19	/	32	22	19	23
Total Problem Gamblers	21%	/	41%	/	48%	44%	54%	68%



# Gender Differences Among Problem Gamblers In Treatment For Substance Abuse



Prevalence Rates	Native Americans					
	South Dakota		Minnesota		Iowa	
	Males (N=32)	Females (N=0)	Males (N=25)	Females (N=23)	Males (N=31)	Females (N=31)
Pathological Gamblers	22%	/	16%	22%	35%	45%
Potential Pathological Gamblers	19	/	32	22	19	23
Total Problem Gamblers	41%	/	48%	44%	54%	68%



# Gender Differences Among Problem Gamblers In Treatment For Substance Abuse



<b>Prevalence Rates</b>	<b>Native American</b>	
	<b>Minn</b>	
	<b>Males (N=25)</b>	<b>Females (N=23)</b>
<b>Pathological Gamblers</b>	<b>16%</b>	<b>22%</b>
<b>Potential Pathological Gamblers</b>	<b>32</b>	<b>22</b>
<b>Total Problem Gamblers</b>	<b>48%</b>	<b>44%</b>



# Gender Differences Among Problem Gamblers In Treatment For Substance Abuse



<b>Prevalence Rates</b>	<b>Native American Iowa</b>	
	<b>Males (N=21)</b>	<b>Females (N=31)</b>
	<b>Pathological Gamblers</b>	<b>35%</b>
<b>Potential Pathological Gamblers</b>	<b>19</b>	<b>23</b>
<b>Total Problem Gamblers</b>	<b>54%</b>	<b>68%</b>

# Parents With Gambling Problems Reported By Native Americans In Treatment For Substance Abuse

## Group I. Iowa (N=62)

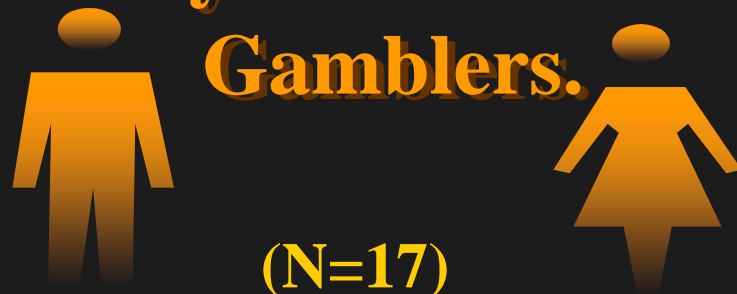
<b>SOG Scores</b>	<b>Mother</b>	<b>Father</b>	<b>Both</b>	<b>Totals</b>
<b>0 (N=3)</b>	<b>1</b>	<b>1</b>	<b>1</b>	<b>3</b>
<b>1-2 (N=21)</b>	<b>2</b>			<b>2</b>
<b>3-4 (N=13)</b>	<b>3</b>	<b>2</b>	<b>2</b>	<b>7</b>
<b>5+ (N=25)</b>	<b>6</b>	<b>2</b>	<b>5</b>	<b>13</b>
<b>Total (N=62)</b>	<b>12</b>	<b>5</b>	<b>8</b>	<b>25 (40%)</b>

# Parents With Gambling Problems Reported By Native Americans In Treatment For Substance Abuse

## Group II. Minn. (N=48)

SOG Scores	Mother	Father	Both	Totals
0 (N=15)		2	2	4
1-2 (N=11)	2			2
3-4 (N=13)	4			4
5+ (N=9)	3	2	1	6
<b>Total (N=48)</b>	<b>9</b>	<b>4</b>	<b>3</b>	<b>16 (33%)</b>

# Incidence of Childhood Trauma Before 18 Yrs of Age, Reported By First Nations Pathological Gamblers.



**Males=47%**

**(N=17)**

**Females=53%**

**Median Age = 37 years**

Persons Affected 88%	Serious Neglect	Physical Abuse	Emotional Abuse	Sexual Abuse	Multiple Types of Maltreatment
<b>Total* (N=15)</b>	<b>73%</b>	<b>87%</b>	<b>67%</b>	<b>60%</b>	<b>93%</b>
<b>Females (N=8)</b>	<b>45</b>	<b>88</b>	<b>75</b>	<b>75</b>	<b>88</b>
<b>Males (N=7)</b>	<b>86</b>	<b>86</b>	<b>57</b>	<b>43</b>	<b>100</b>

*\*Subjects who refused to participate or denied maltreatment during childhood (N=2 Females) Median Age=54 Yrs.*



# Recommendations For Action

# Action 1

*Beginning now, and at 4 year intervals, conduct Prevalence Studies of gambling and problem gambling among aboriginal juveniles and adults in the province.*

## Action 2

*Allocate 2% of gross aboriginal gaming revenues for gambling-related education, treatment, and prevention programs on provincial reserves.*

## Action 3

*Monitor how tribal gaming profits are used to improve education, health, and social services, housing, roads, and other infrastructure on reserves.*

## Action 4

*Encourage self-exclusion from  
aboriginal casinos by tribal  
members.*

# AGENDA

## 4. Endgame Options: Triumph, Tragedy or Trade-off? The Hard Questions

# Hard Questions

## The Benefits Side:

- What are the specific social, economic, and quality of life benefits for individuals from expanded gambling opportunities?
- To whom do these benefits primarily accrue?
- Are the benefits of increased gambling sustainable and renewable?
- What is the impact of gambling expansion on existing gambling and other forms of commerce in a region?

*More*

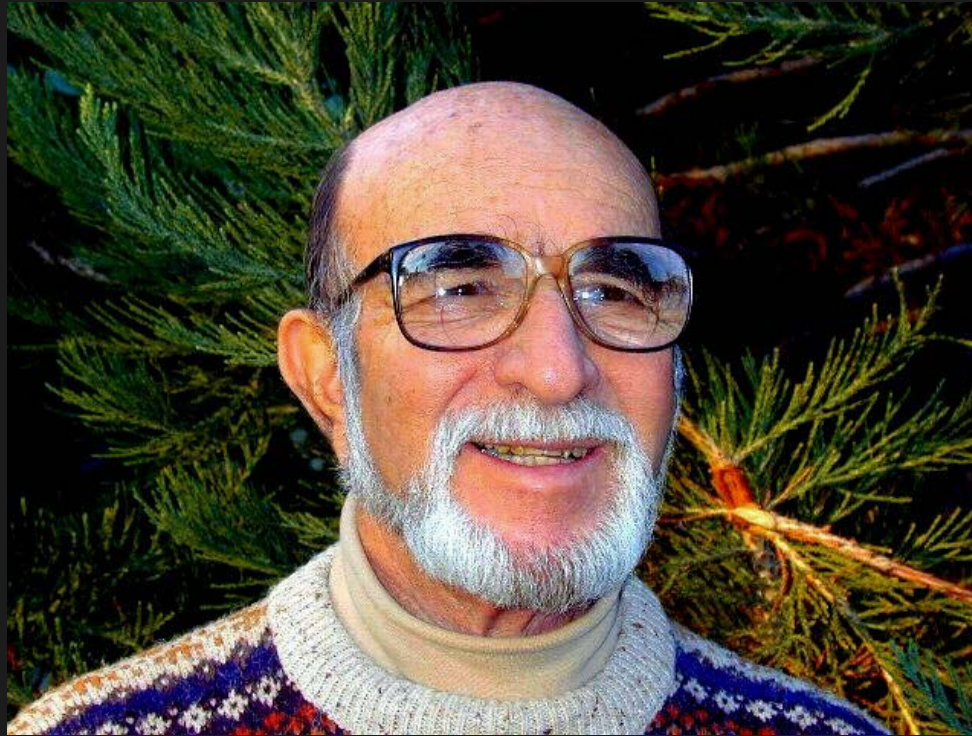


# Hard Questions

## The Costs Side:

1. What are the social, economic, and quality of life costs for individuals and communities associated with expanded gambling opportunities?
2. To whom do these costs accrue?
3. Are these costs likely to increase or decrease over time?
4. What are the emerging areas of concern?

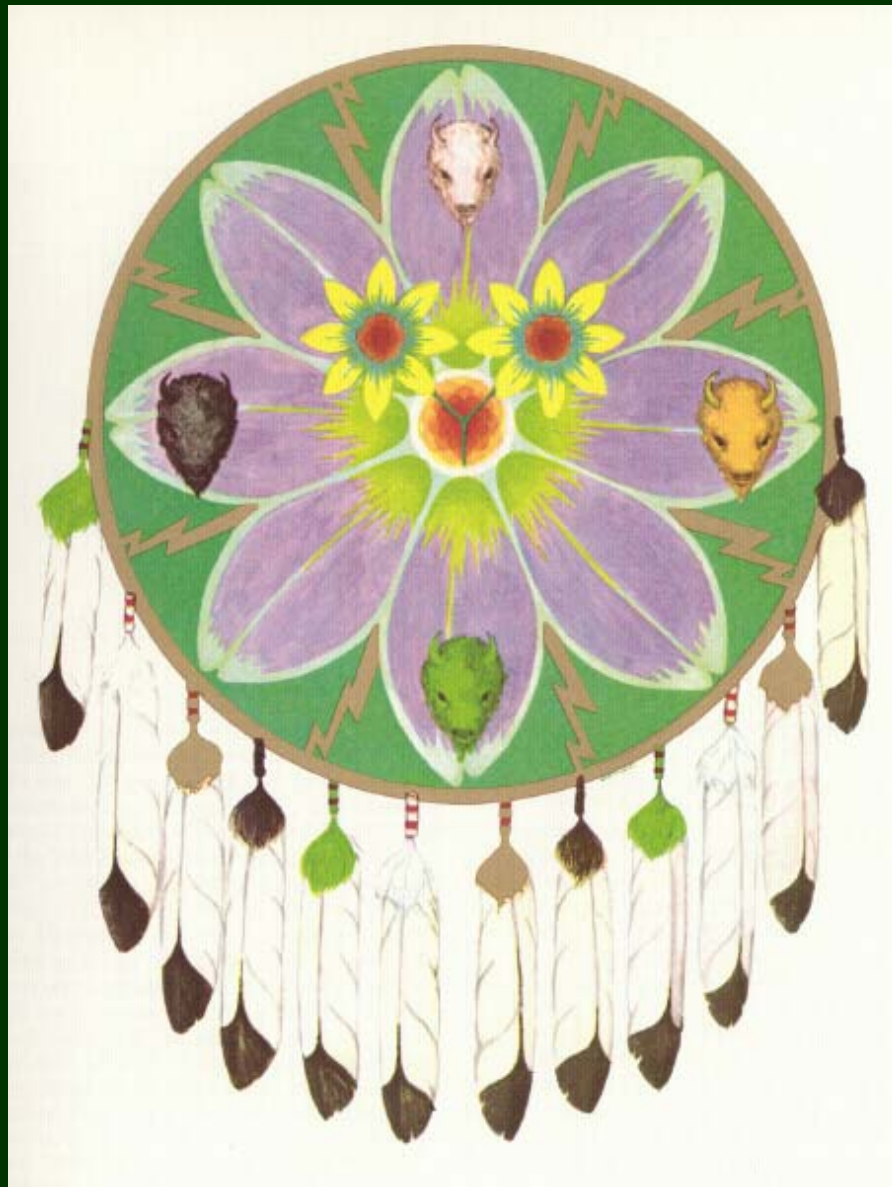
# 5. The Elder's Answer



**THANK YOU**

**Durand F. Jacobs, Ph.D., ABPP**

**Clinical Professor of Medicine (Psychiatry)  
Loma Linda University Medical School, California**



*Seven Arrows*

*Hyemeyohsts  
Storm*

*Ballentine Books*

*NY  
1972*

*Shields designed  
by Hyemeyohsts  
Storm and  
Karen Harris,  
painted by Karen  
Harris*