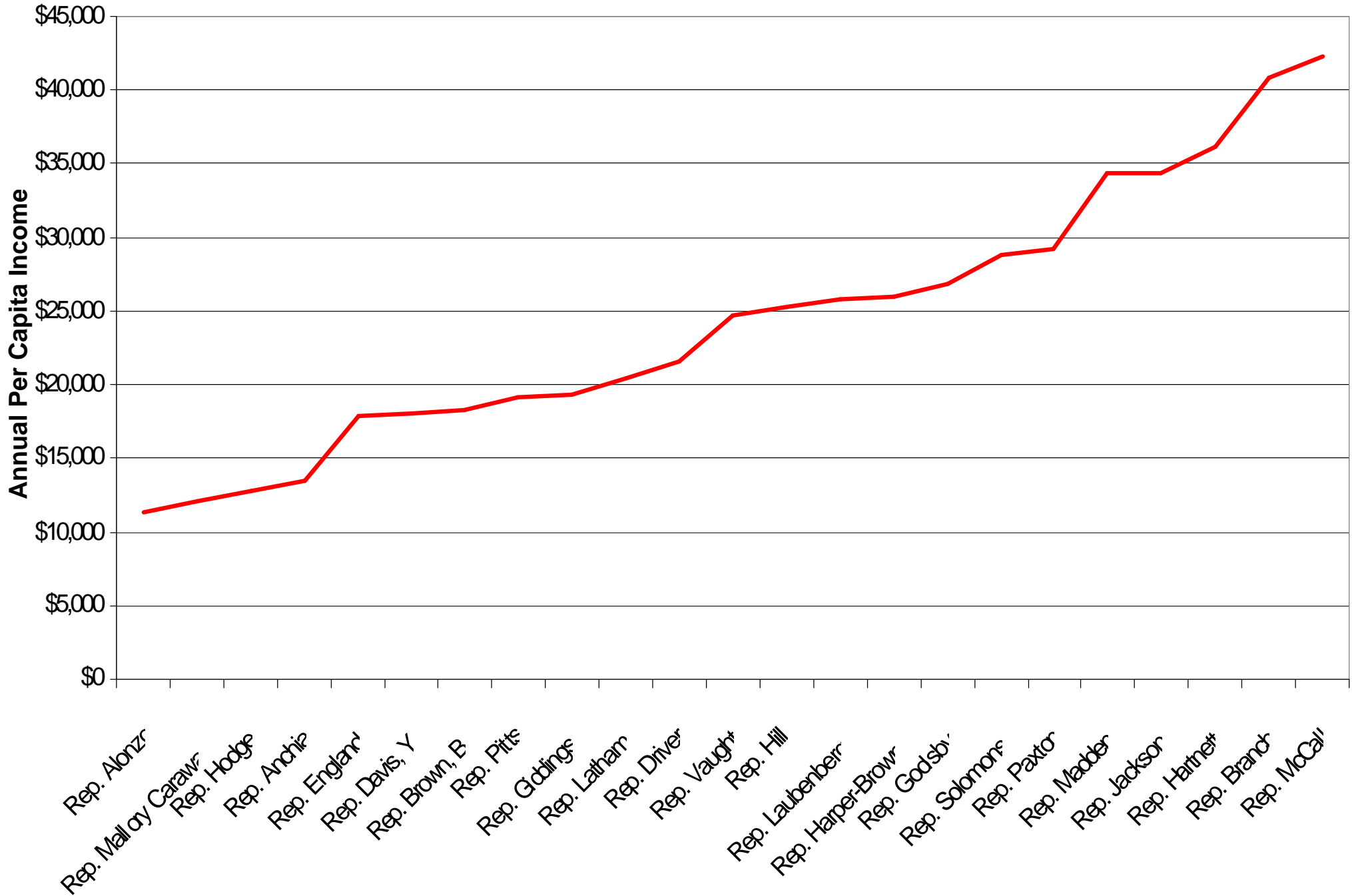


Annual Per Capita Income

Dallas Area Legislative House Districts

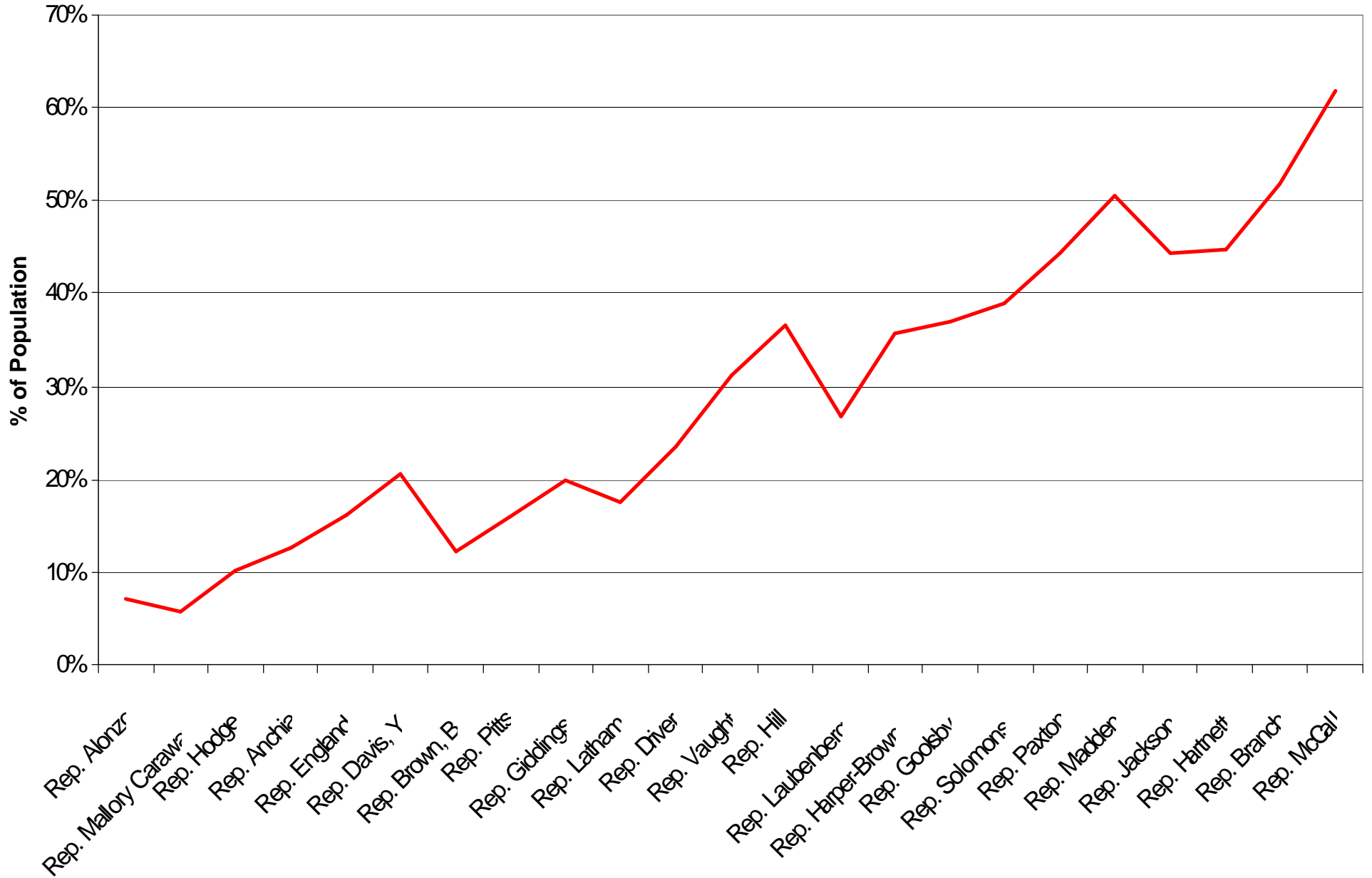
Source: US Bureau of the Census, 2000



Bachelors Degree or Higher (Age 25+)

Dallas Area Legislative House Districts

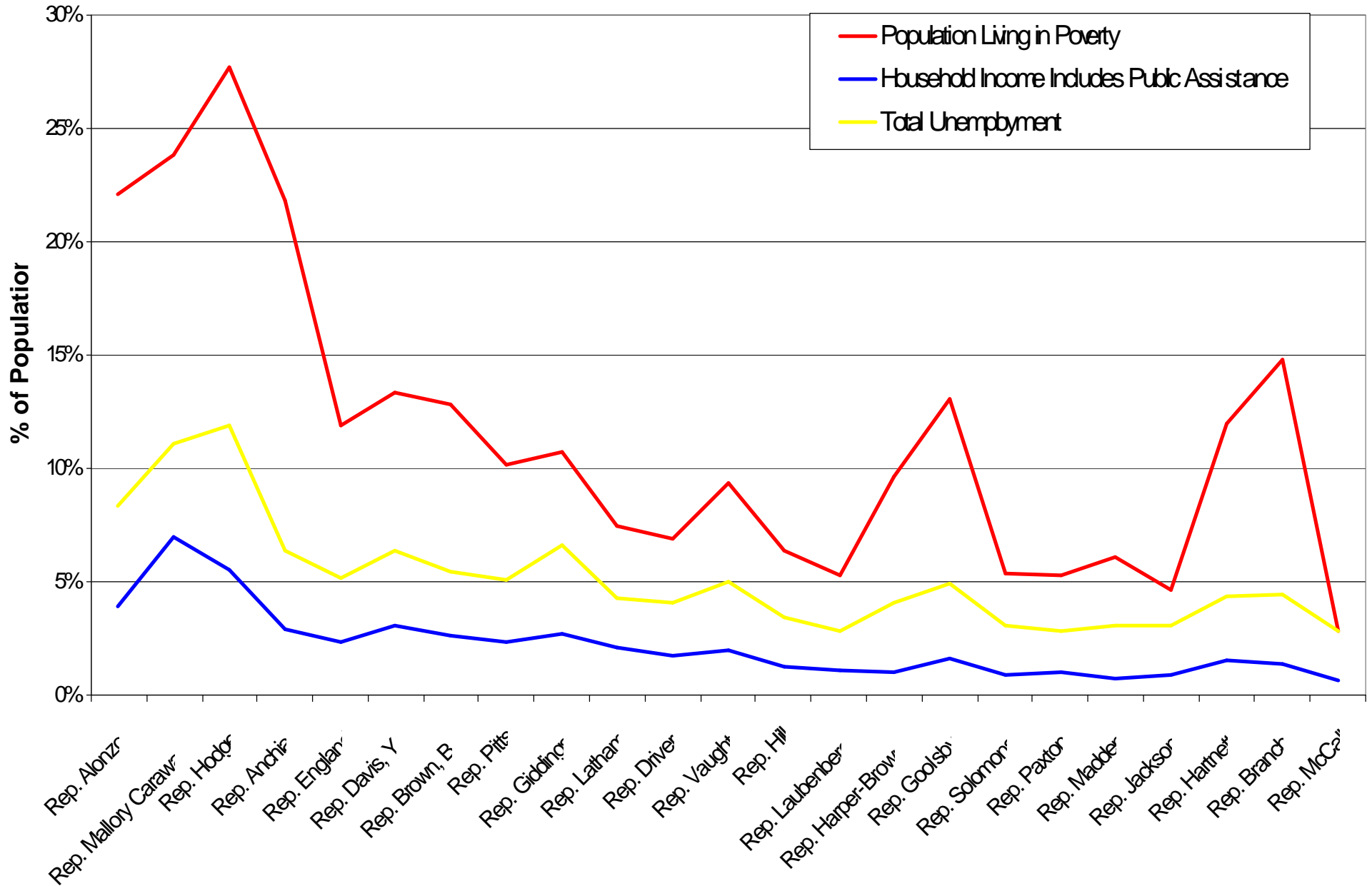
Source: US Bureau of the Census, 2000



Selected Labor (Age 16+) & Income Characteristics

Dallas Area Legislative House Districts

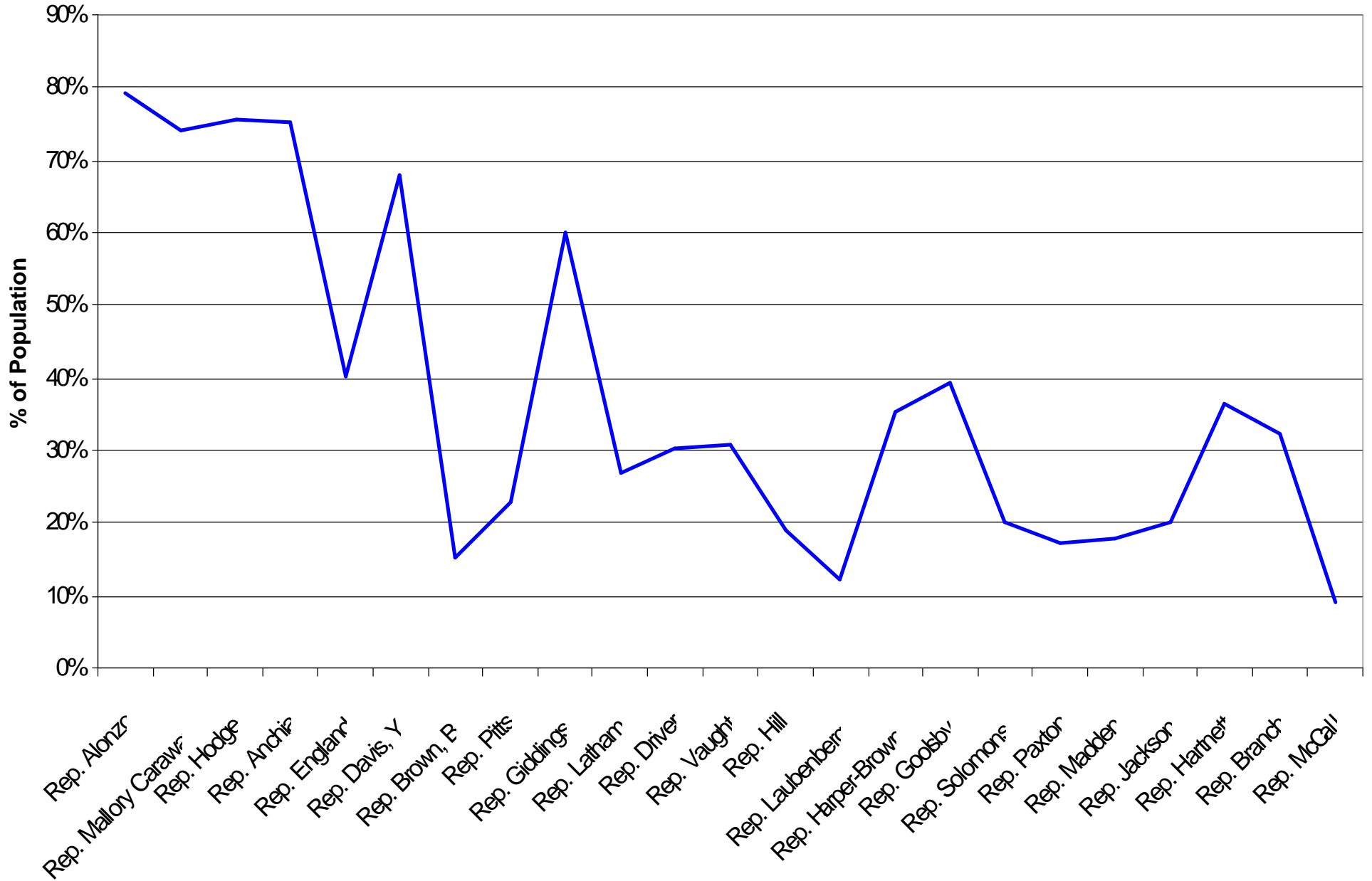
Source: U.S. Bureau of the Census, 2000



Black & Hispanic Voting Age Population

Dallas Legislative House Districts

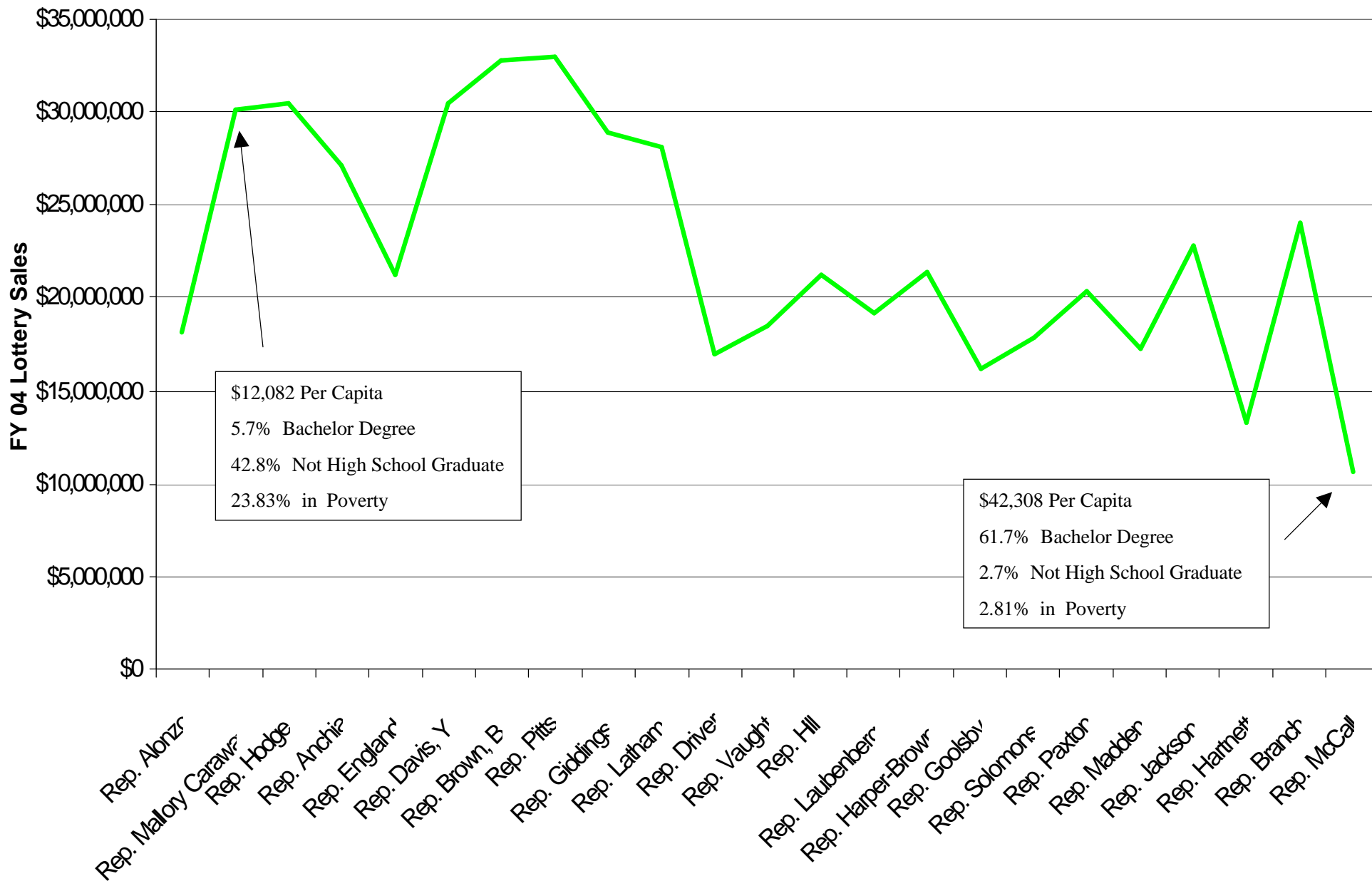
Source: US. Bureau of the Census, 2000



FY07 Total Texas Lottery Sales

Dallas Legislative House Districts

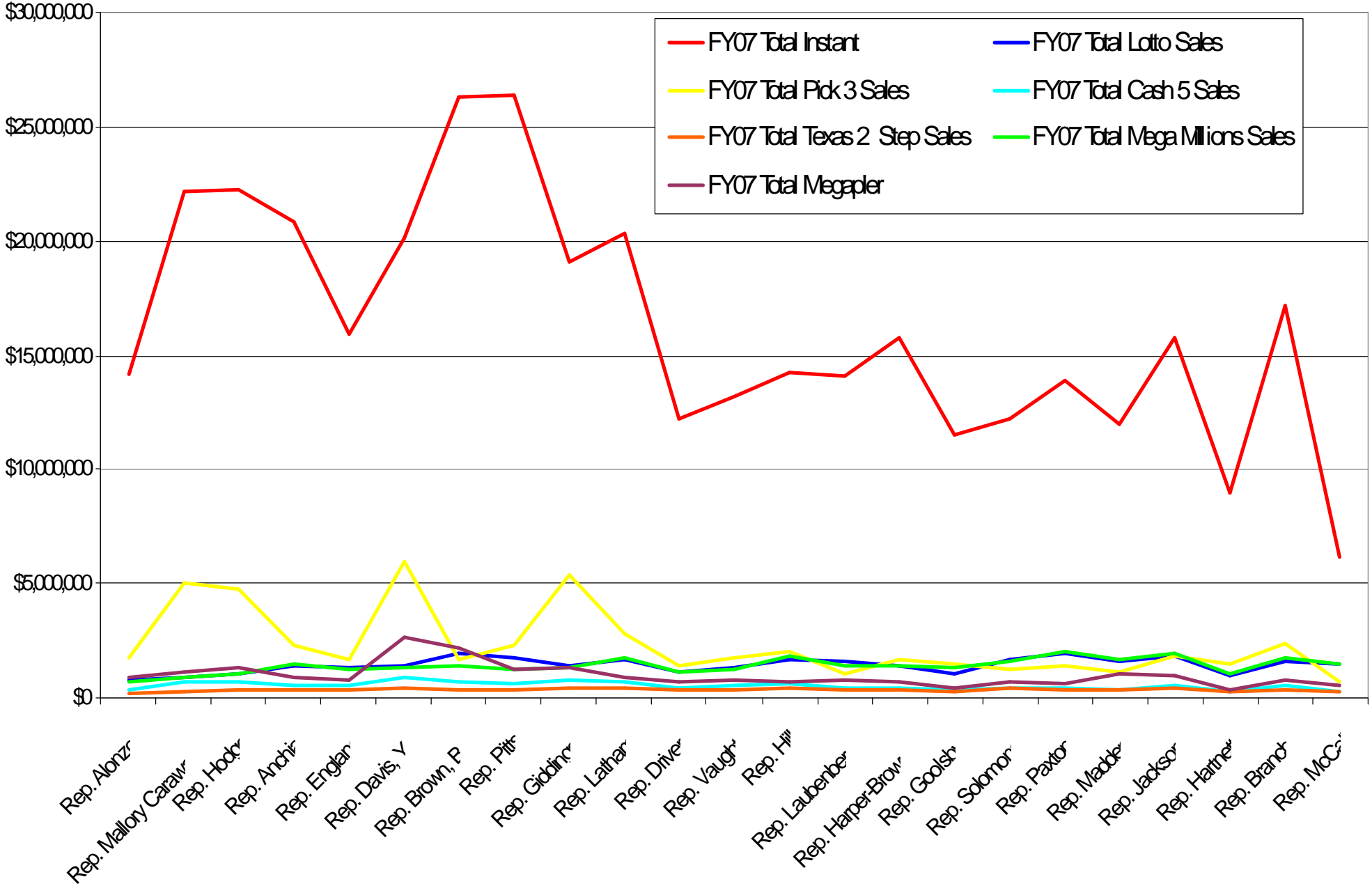
Source: Texas Lottery Commission FY07 Sales & Retailer Data (Actual Retailer Sales)



FY07 Texas Lottery Sales by Product

Dallas Legislative House District

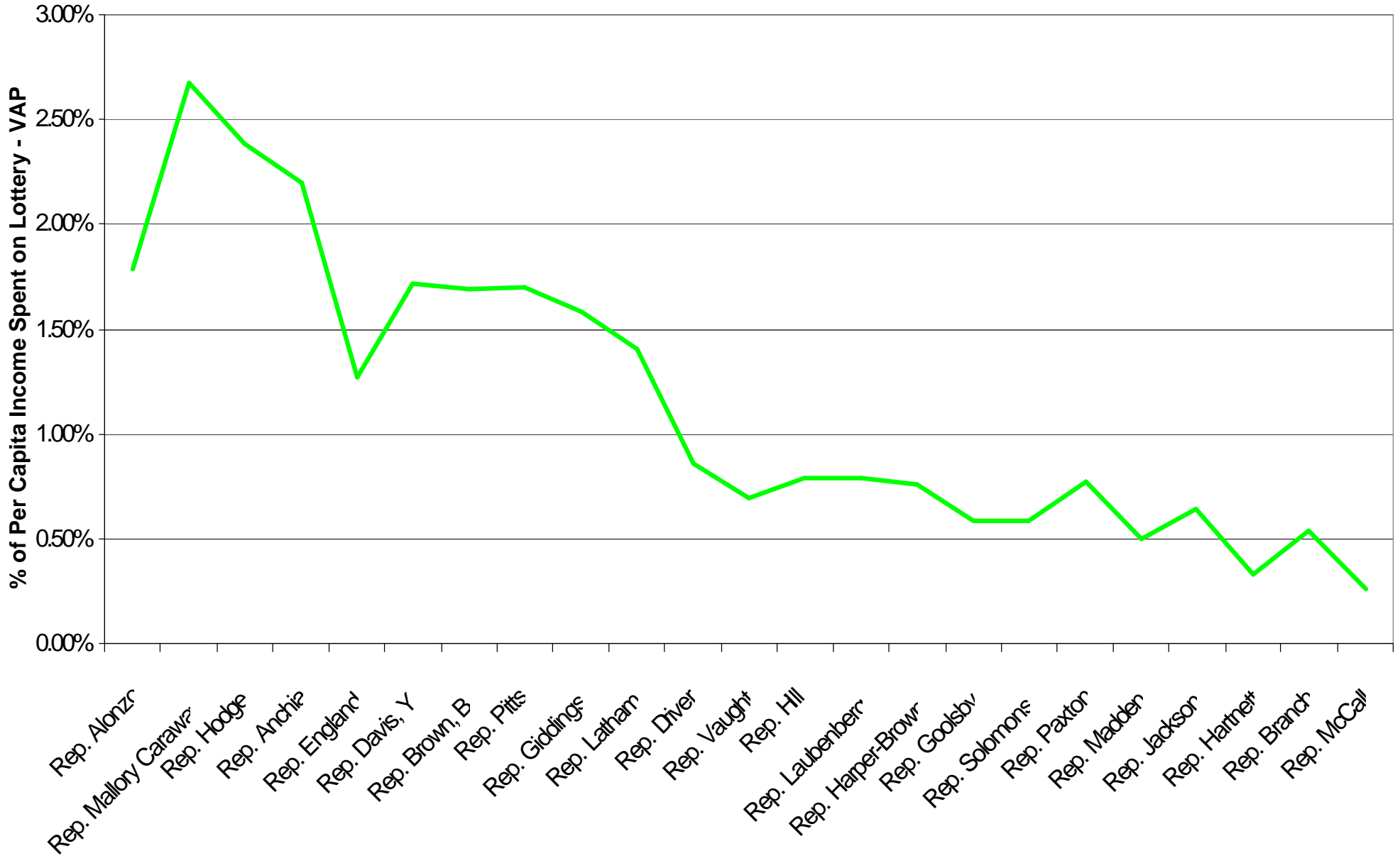
Source: Texas Lottery Commission FY07 Sales & Retailer Data (Actual Retail Sales)



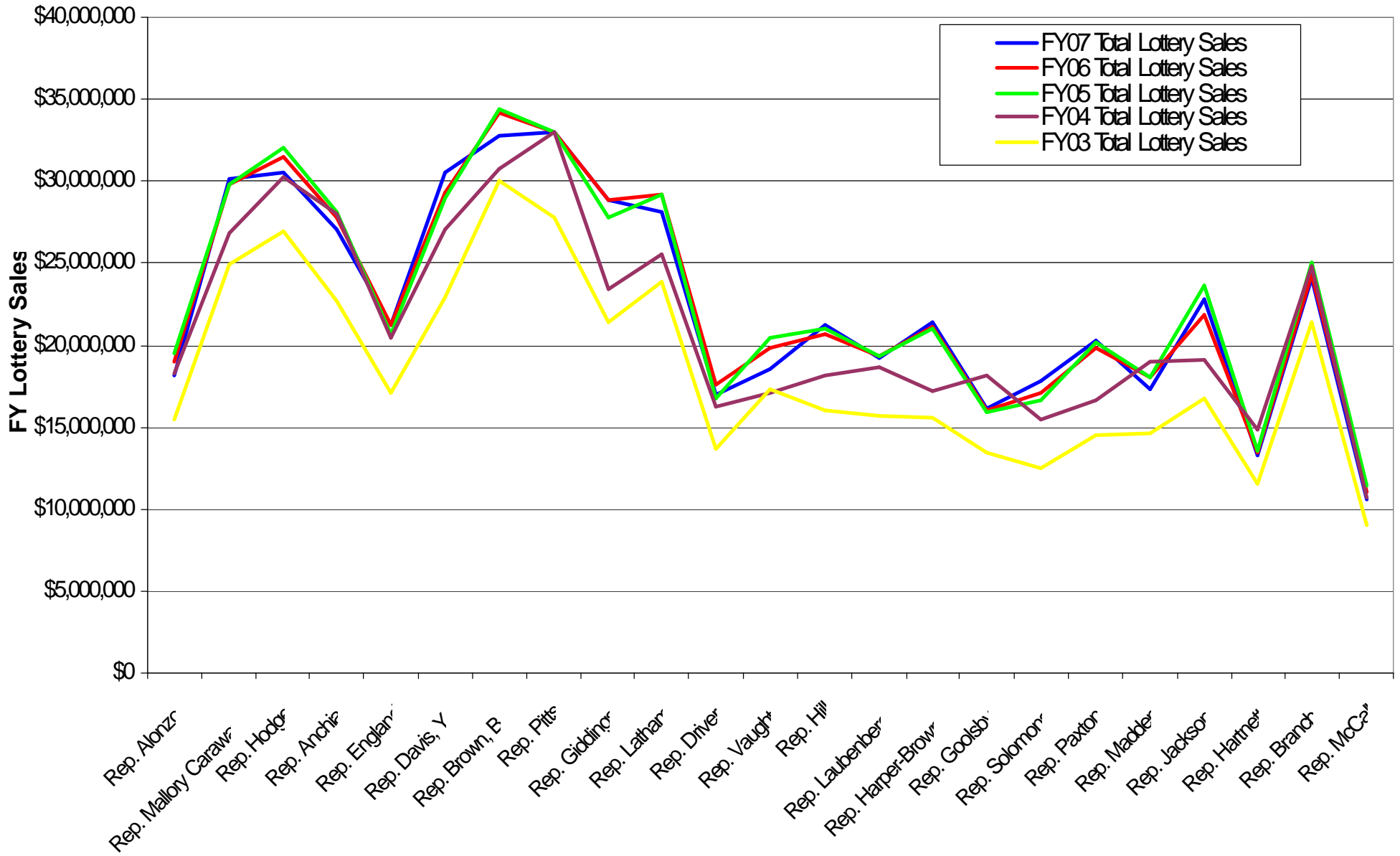
Percentage of Per Capita Income Spent on Lottery- Voting Age Population

Dallas Area Legislative House Districts

Source: Texas Lottery Commission FY07 Sales & Retailer Data & US. Bureau of the Census, 2000



FY03, FY04, FY05, FY06 & FY07 Total Texas Lottery Sales
Dallas Area Legislative House Districts
 Source: Texas Lottery Commission Sales & Retailer Data (Actual Retailer Sales)



FY 03, FY04, FY05, FY06 & FY07 % of Per Capita Income Spent on Lottery- Voting Age Population
Dallas Area Legislative House Districts
 Source: Texas Lottery Commission Sales & Retailer Data & U.S. Bureau of the Census, 2000

