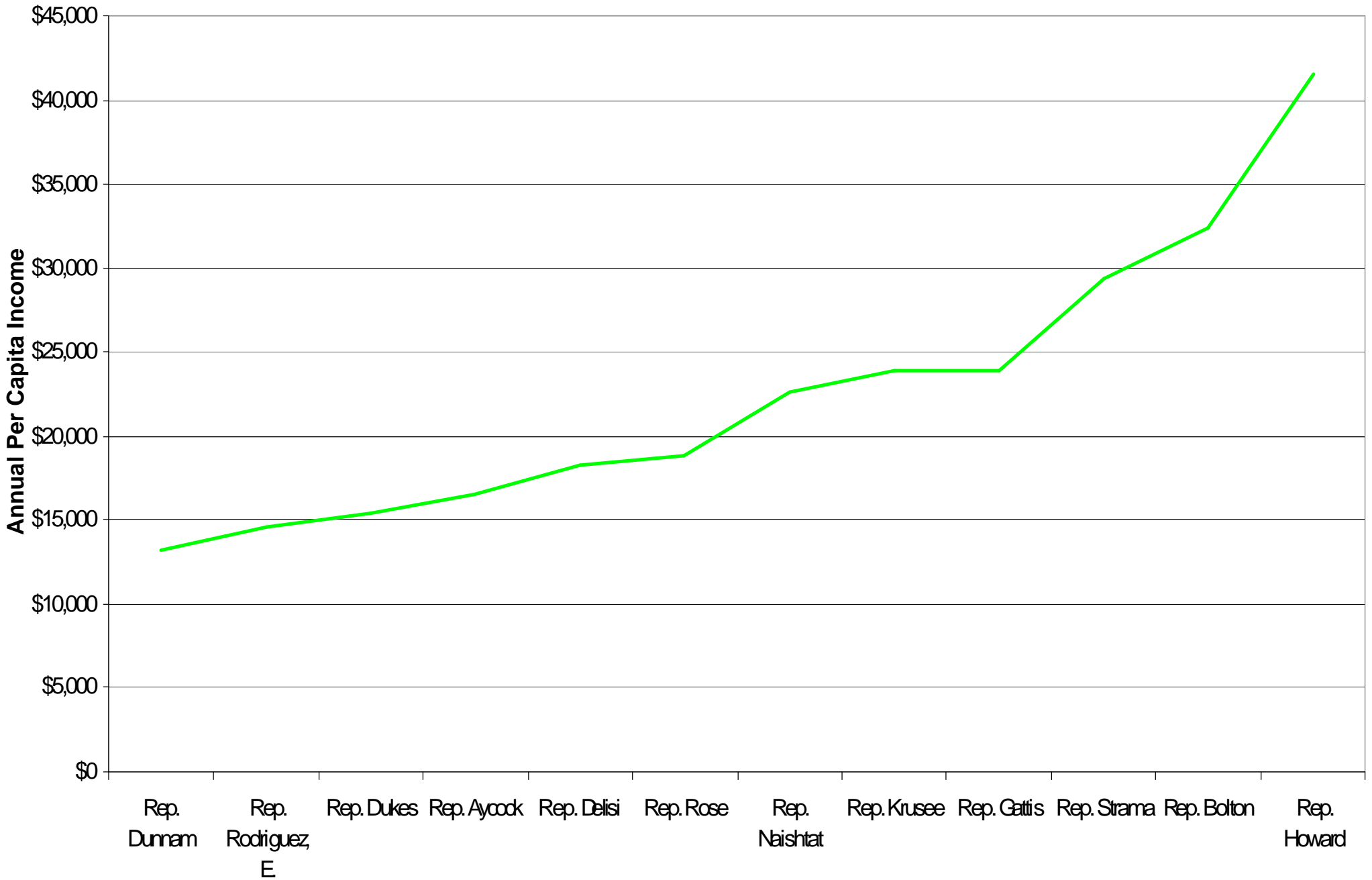


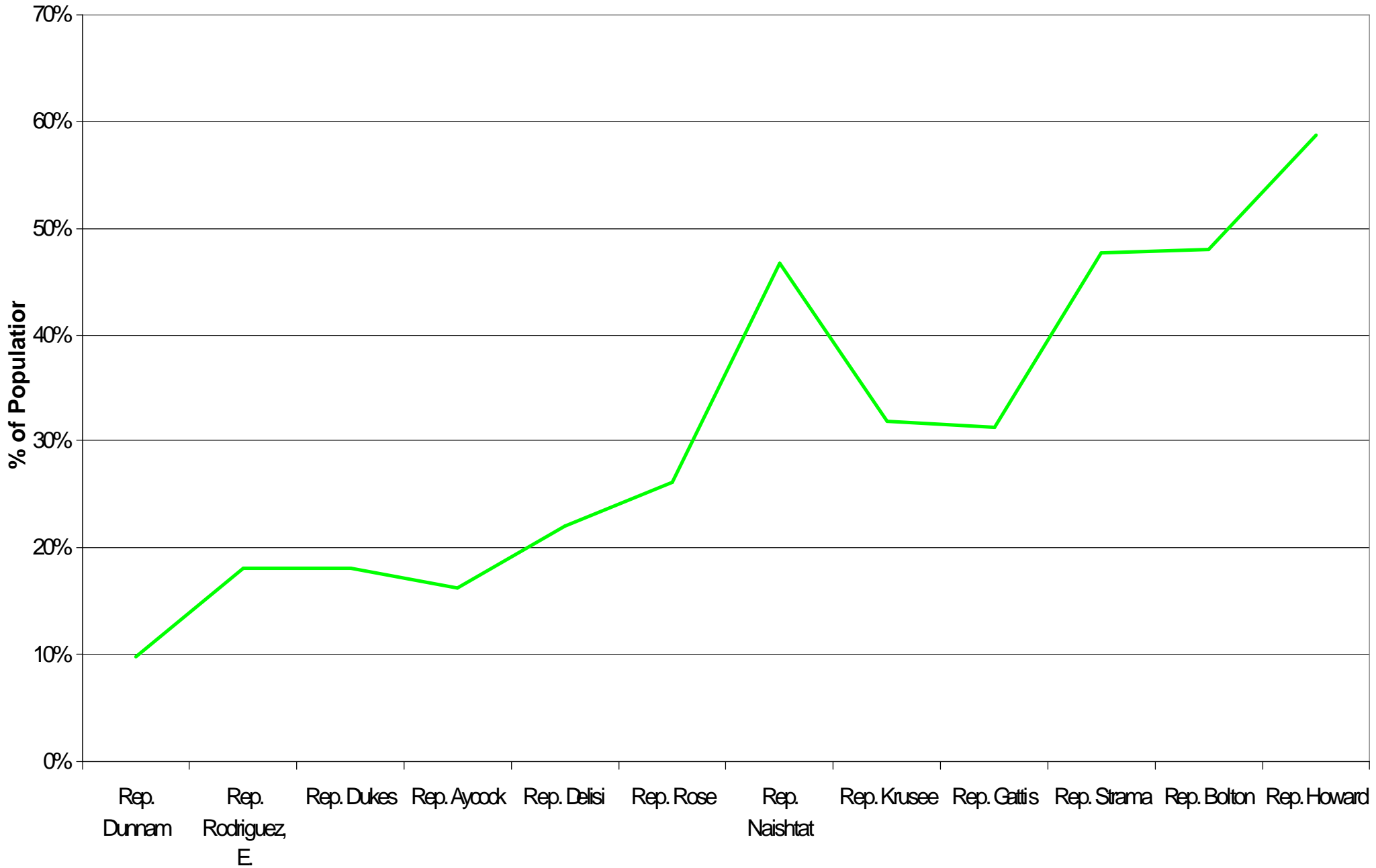
Annual Per Capita Income

Austin and Central Texas Area Legislative House Districts

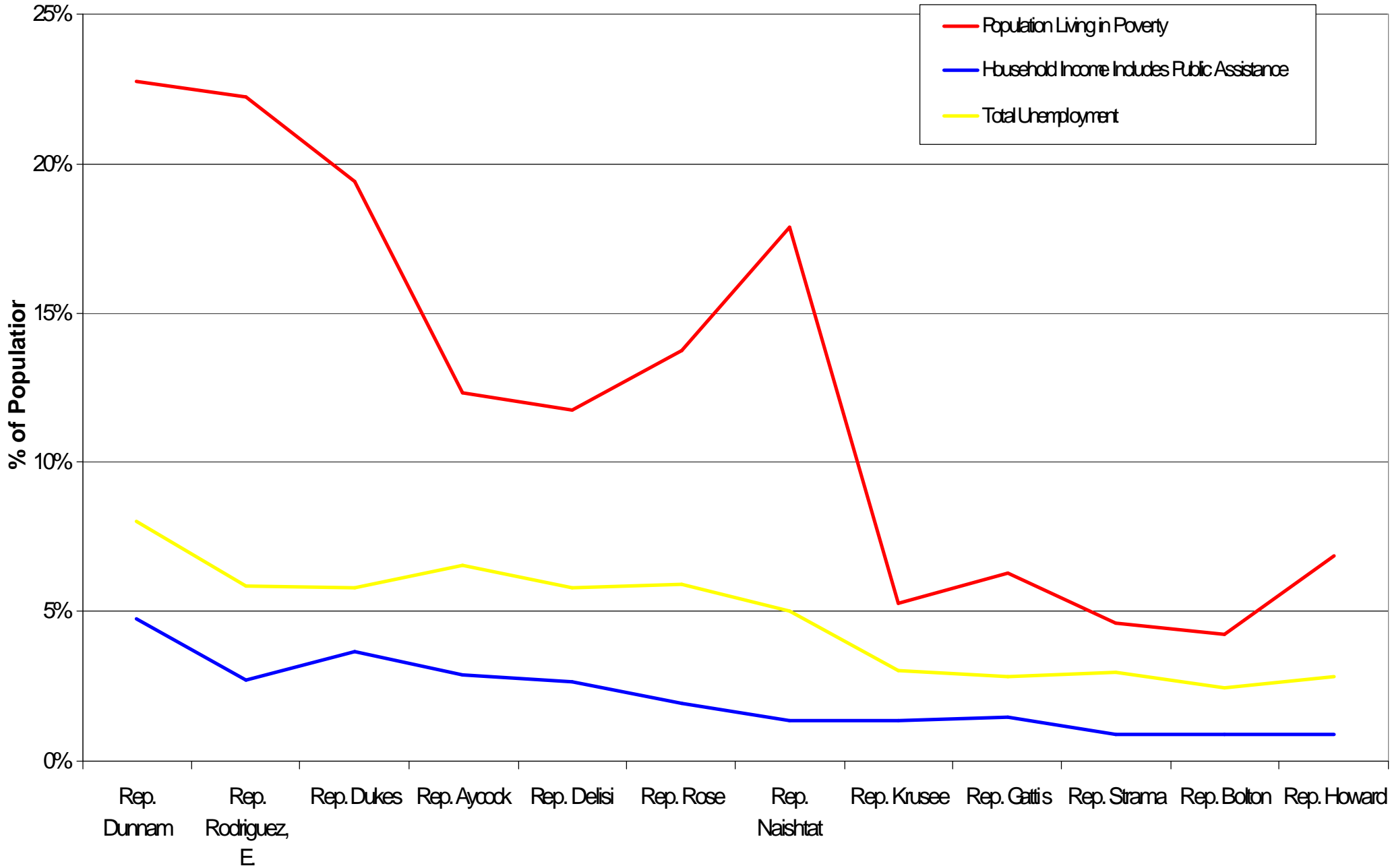
Source: U.S. Bureau of the Census, 2000



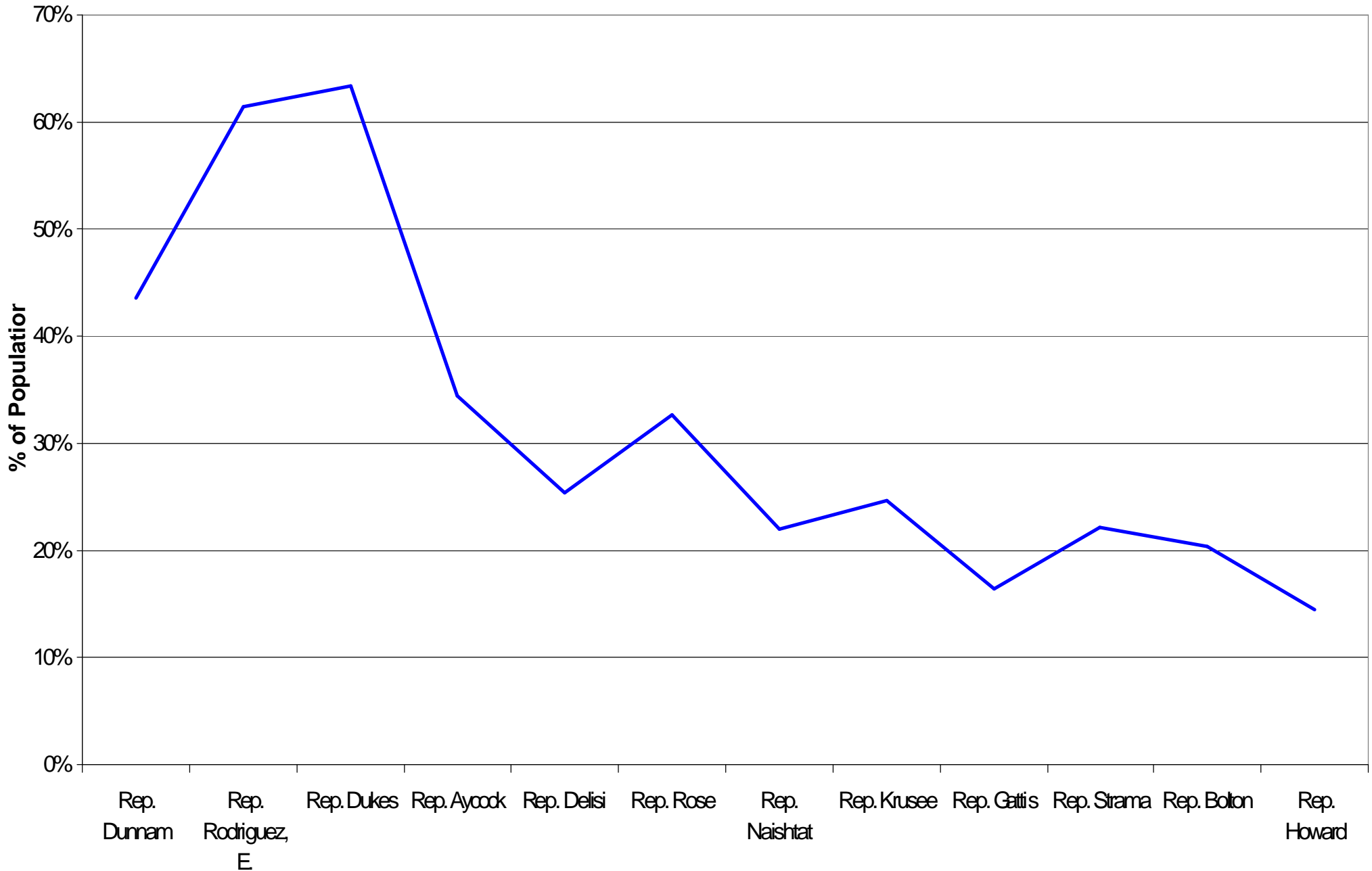
Bachelors Degree or Higher (Age 25+)
Austin and Central Texas Area Legislative House Districts
Source: U.S. Bureau of the Census, 2000



Selected Labor (Age 16+) & Income Characteristics
Austin and Central Texas Area Legislative House Districts
 Source: U.S. Bureau of the Census, 2000



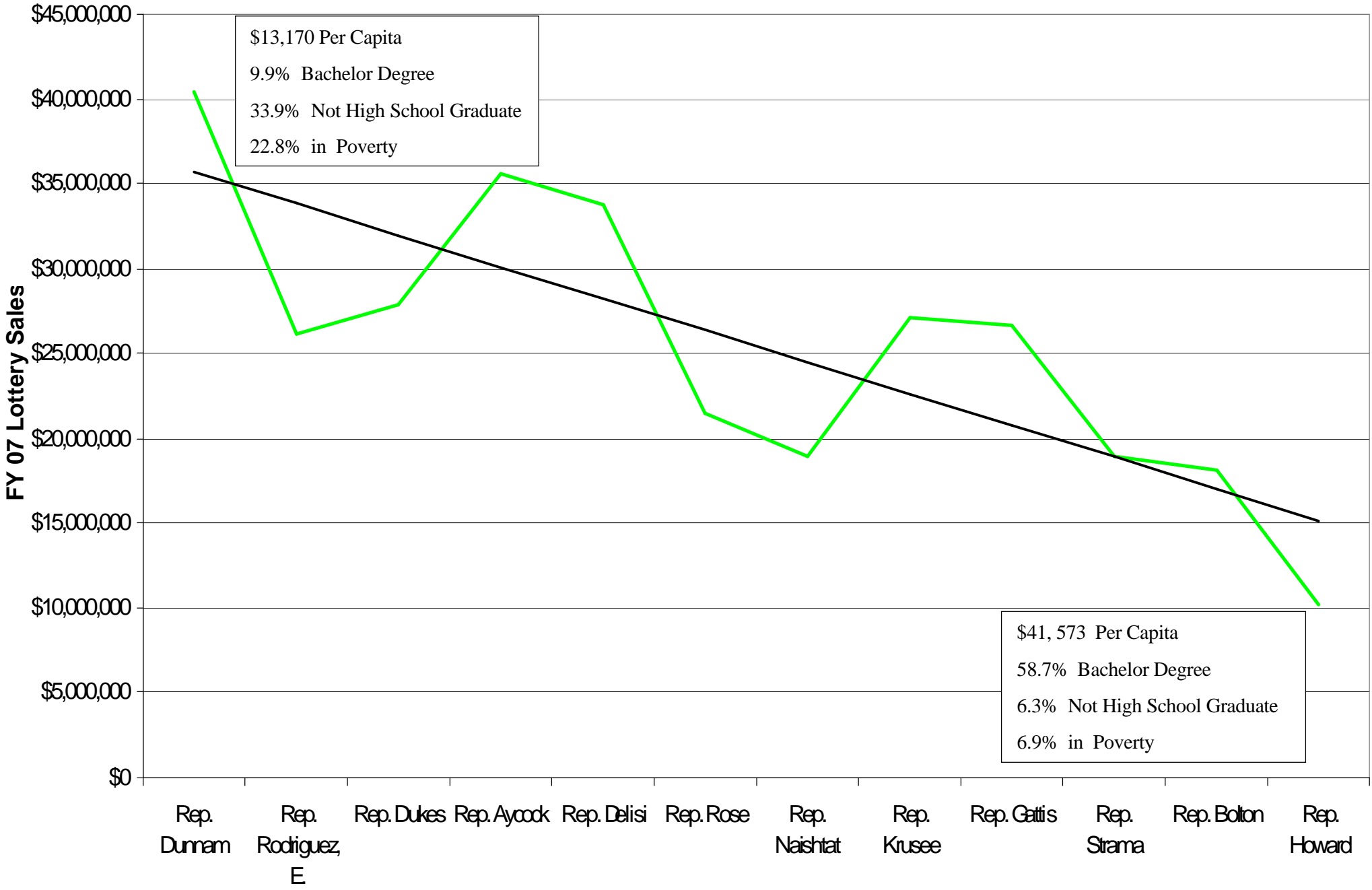
Black & Hispanic Voting Age Population
Austin and Central Texas Area Legislative House Districts
Source: U.S. Bureau of the Census, 2000



FY07 Total Texas Lottery Sales

Austin and Central Texas Area Legislative House Districts

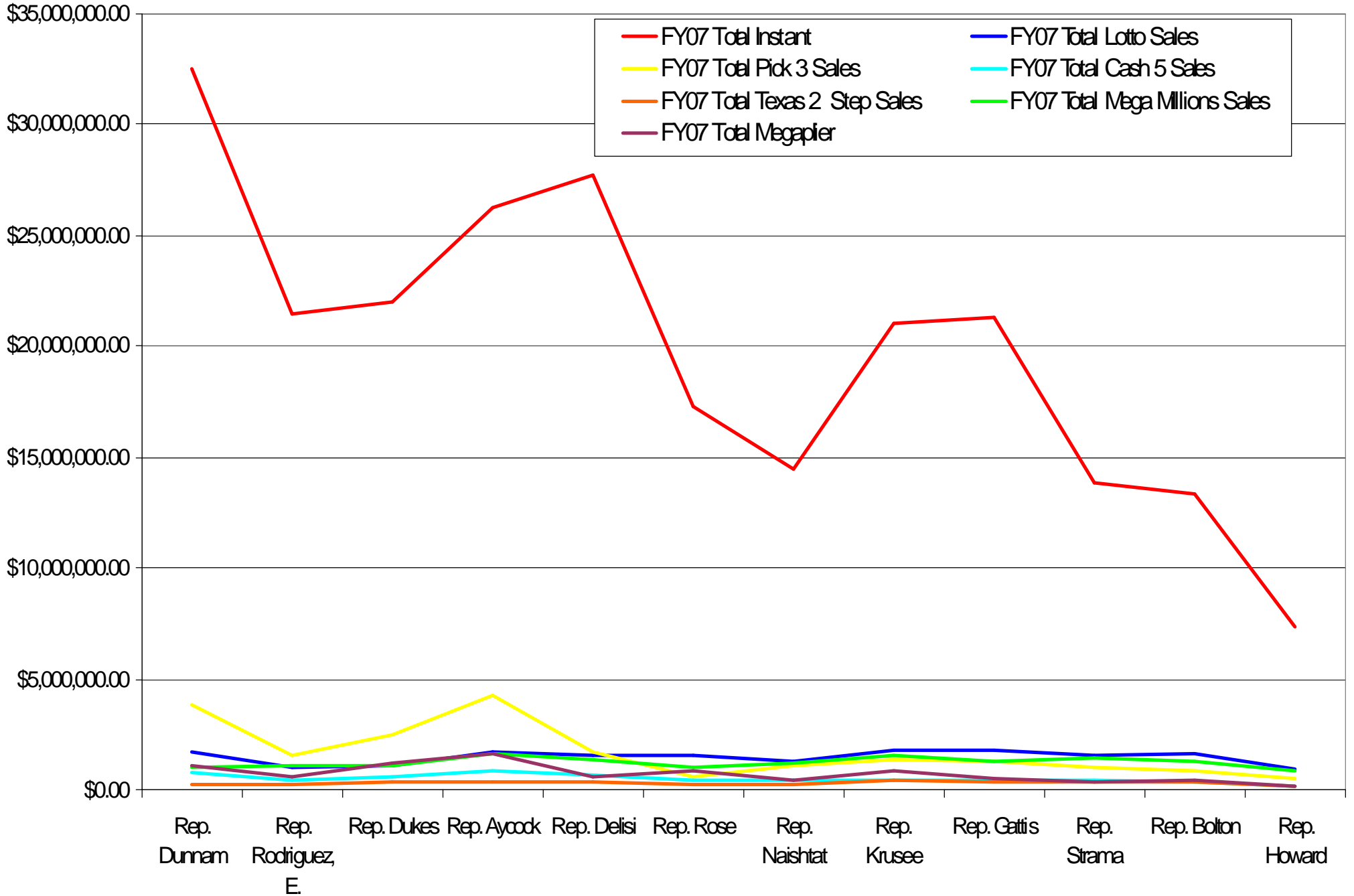
Source: Texas Lottery Commission FY06 Sales & Retailer Data (Actual Retailer Sales)



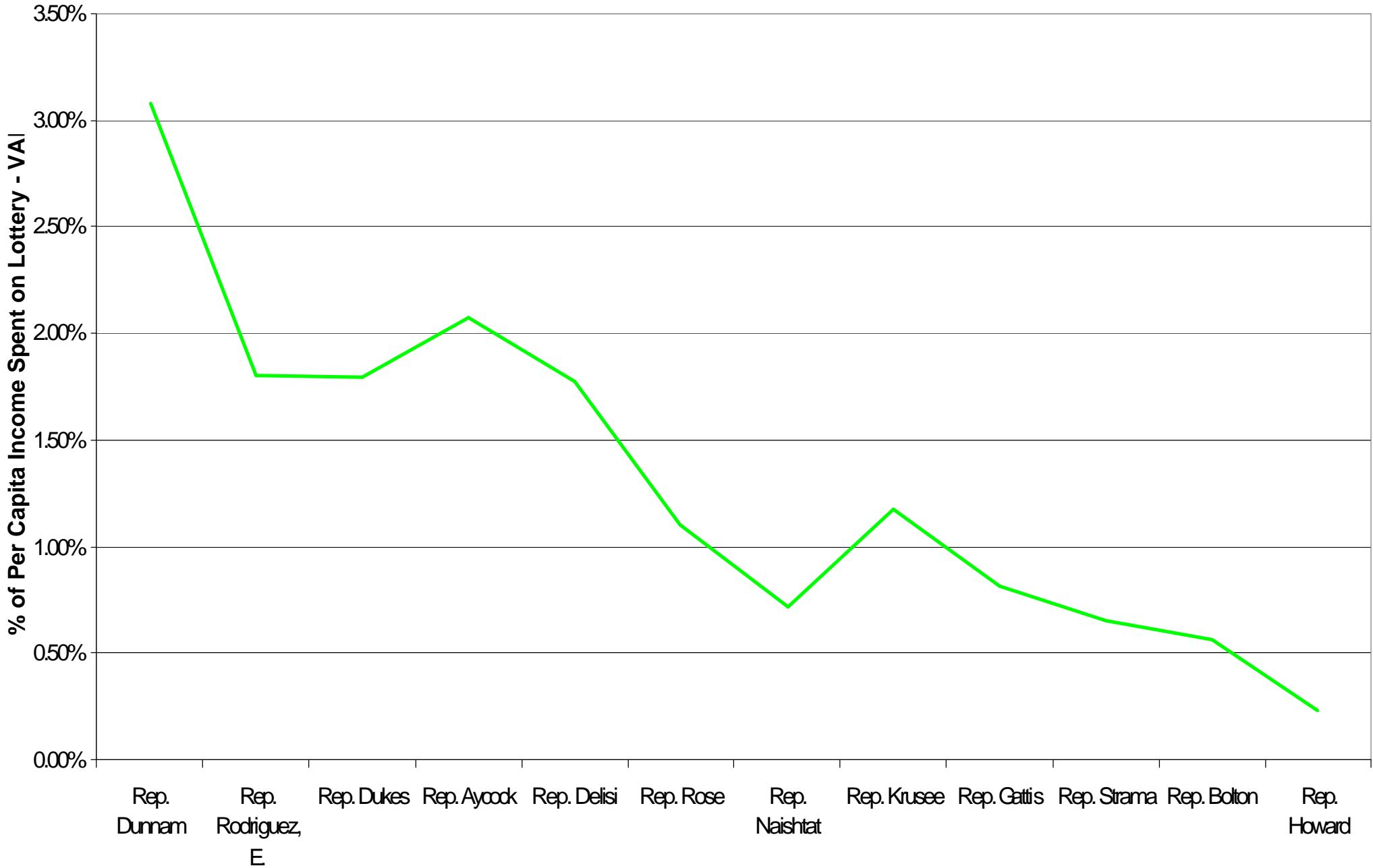
FY07 Texas Lottery Sales by Product

Austin & Central East Area Legislative House District

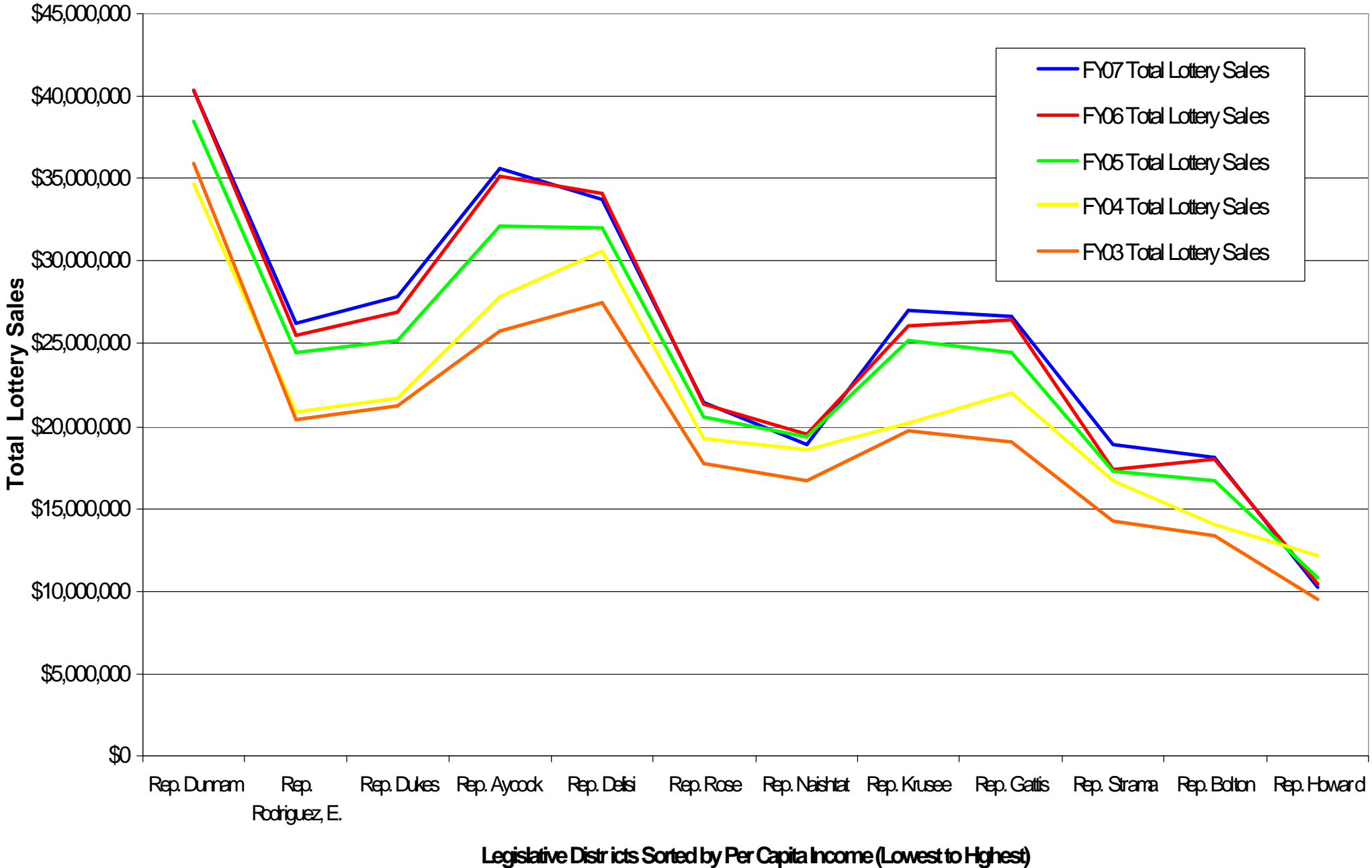
Source: Texas Lottery Commission FY07 Sales & Retailer Data (Actual Retailer Sales)



Percentage of Per Capita Income Spent on Lottery- Voting Age Population
Austin and Central Texas Area Legislative House Districts
 Source: Texas Lottery Commission FY 07 Sales & Retailer Data & U.S. Bureau of the Census, 2000



FY03, FY04, FY05, FY06 & FY07 Texas Lottery Sales
Austin and Central Texas Area Legislative House Districts
 Source: Texas Lottery Commission Sales & Retailer Data (Actual Retailer Sales)



FY03, FY04, FY05, FY06 & FY07 Percentage of Per Capita Income Spent on Lottery

Austin and East Central Texas Area Legislative House Districts

Source: Texas Lottery Commission Sales and Retailer Data & U.S. Bureau of the Census, 2000

